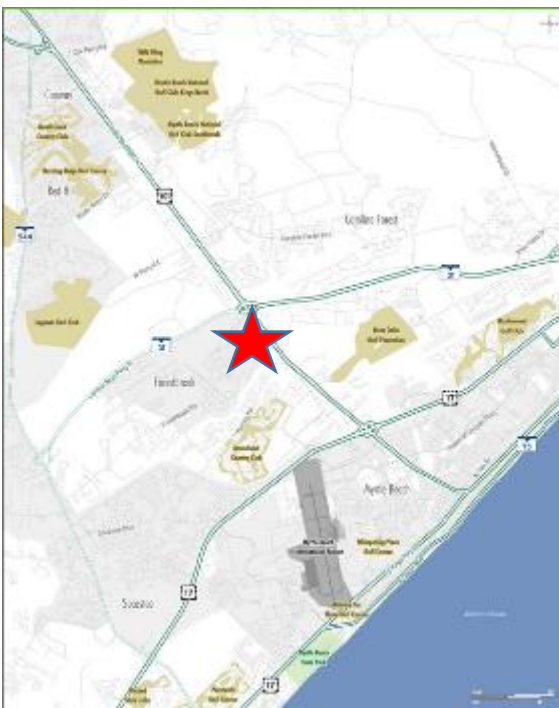


# FORESTBROOK VILLAGE – Myrtle Beach, SC

3501 Belle Terre Blvd, Myrtle Beach, SC 29579



- Size: 65,586 SF Center with OPs totaling 7 Acres
- New 2008 construction
- Anchors: Food Lion & Family Dollar
- Availabilities: 1,200 – 4,800 SF; 0.5-2.0 Acres
- DR Horton delivers ± 600 homes with shared access in immediate behind the shopping center
- Loggerhead Capital commencing construction on 100 of estimated 500 homes under .25 miles away
- Deal making landlord with flexible lease terms

	1 MILE	3 MILES	5 MILES
POPULATION (2014 EST.)	3,530	30,719	84,931
POPULATION (2019 PROJECTED)	3,962	34,997	94,296
GROWTH 2014 - 2019	12.23%	13.93%	11.03%
AVG. HH INCOME (2014 EST.)	\$56,457	\$57,679	\$50,937

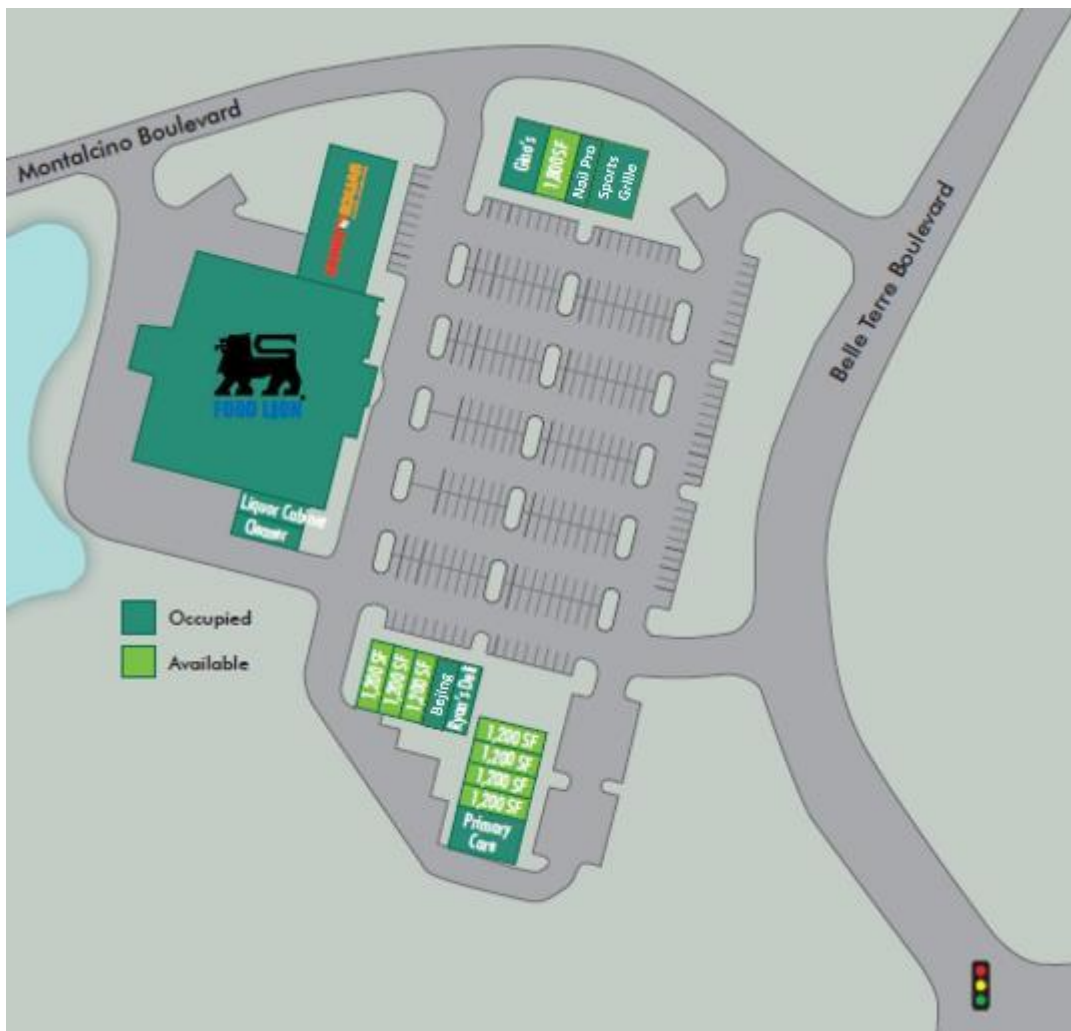
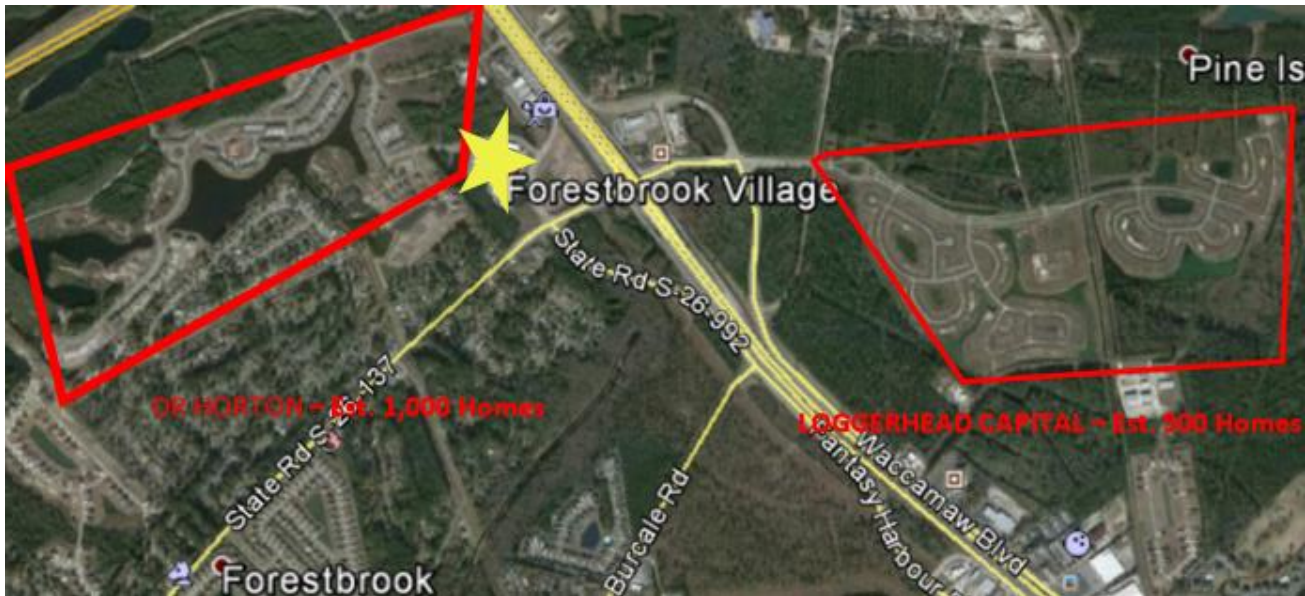
PLEASE CONTACT KEVIN KUSH OR BEN BOLZ FOR ADDITIONAL INFORMATION:  
615-504-7445 OR 504-402-1645 OR KEVIN@PMAT.NET OR BEN@PMAT.NET

# FORESTBROOK VILLAGE – Myrtle Beach, SC

3501 Belle Terre Blvd, Myrtle Beach, SC 29579



PMAT Companies



#### Available Suites:

- A3- 1,200 square feet
- A4- 1,200 square feet
- A5- 1,200 square feet
- A6- 1,200 square feet
- B3- 1,200 square feet
- B4- 1,200 square feet
- B5- 1,200 square feet
- E3- 1,800 square feet

#### Max Contiguous:

- A- 4,800 square feet
- B- 3,600 square feet
- E- 1,800 square feet

#### Other Space Options:

- A- 1,200 square feet
- A- 2,400 square feet
- A- 3,600 square feet
- A- 4,800 square feet
- B- 1,200 square feet
- B- 2,400 square feet
- B- 3,600 square feet

PLEASE CONTACT KEVIN KUSH OR BEN BOLZ FOR ADDITIONAL INFORMATION:  
615-504-7445 OR 504-402-1645 OR KEVIN@PMAT.NET OR BEN@PMAT.NET